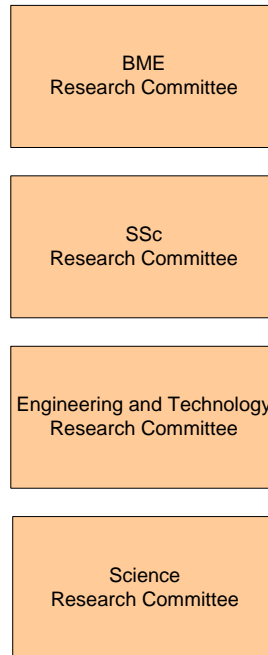
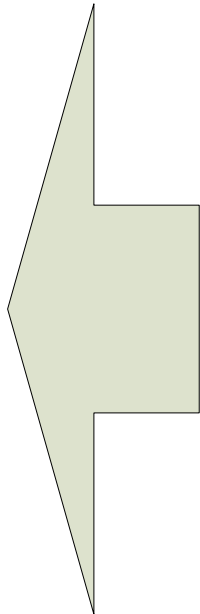


# Research Structure

## School of Doctoral Studies (EU)

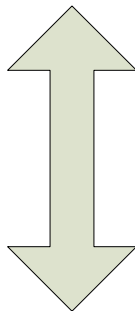
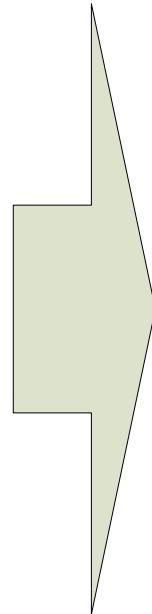
### Key Functions:

- Manages research process by student and by research fellow
- Structures admissions committees
- Evaluates candidates to doctoral studies applications and research proposals
- Performs applicants' selection and admission
- Assigns studies supervisors and approves studies individual programmes
- Publishes research fellowships vacancies
- Approves jobs and grants assignement to doctoral students
- Evaluate students' performance and contributions to research work, and updates advances register
- Organise periodical and final seminars for students research presentation and defense
- Assigns examiners and evaluates theses defenses
- Approves students' research works publication



### Additional Functions:

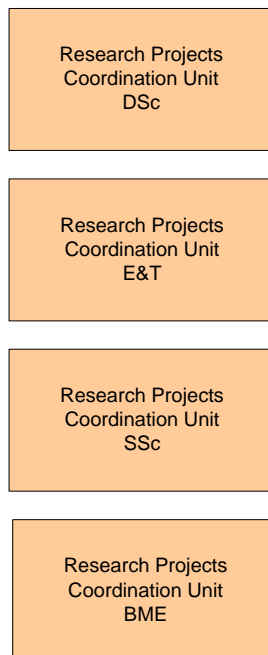
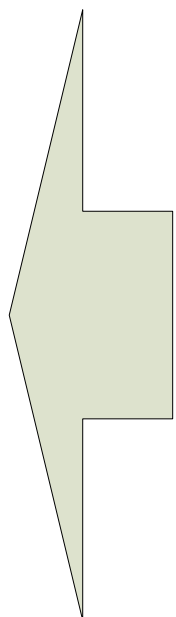
- Presents funding requirements to research development and grants assignment
- Develops coaching programmes oriented to train students on advanced research procedures under highly experienced researchers supervision
- Develops and organises seminars, specific courses, academic and scientific events to enforce students learning, training and creativity
- Takes part on joint academic and scientific simposia, in collaboration with other universities, schools, colleges and research centres worldwide
- Presents IIU's relevant contributions to different disciplines' knowledge and development
- Takes part on Degrees Validation and EUASC Certification Boards



## IIU Libraries and Research Centre

### Key Functions:

- Manages research process by research project
- Keeps and updates research projects portfolio's registration
- Coordinates and integrates interdisciplinary, inter-collegiate and inter-universities ressearch work into individual projects
- Provides information on research fellowships vacancies by project
- Manages assingment of students, research associates and research fellows into individual projects' research programmes
- Evaluates and registers projects performance, disciplines, departments and individual research participants contributions to each project's performance
- Receives research works approval for publishing and triggers publishing process
- Receives edited and/or published works and includes them in libraries collections



### Additional Research Support Functions:

- Provides and maintenance research facilities
- Provides and updates coordination to publishing of relevant contributions to research projects
- Coordinates joint academic and scientific events organisation (inter-universities, inter-collegiate, inter-disciplines)



### Additional Libraries Support Functions:

- Organises, keeps and updates libraries collections by field of knowledge, department, discipline, research project, etc.
- Keeps and maintains collections indexation and management
- Shares knowledge portfolio with other universities and research centres